



SOURCE Overview



Presented to: House Study Committee on Adult Day Services

Presented by: Marcey Alter, Medicaid Assistant Chief,
Department of Community Health



Mission

The Georgia Department of Community Health

We will provide access to affordable, quality health care to Georgians through effective planning, purchasing and oversight.

We are dedicated to a healthy Georgia.

Medicaid

- Medicaid is a state administered health insurance program funded jointly by state and federal dollars
- Social Security Act, Title XIX
- Within broad federal guidelines, each state establishes:
 - Eligible Groups
 - Types of Ranges of Services
 - Payment Levels for Services
 - Administrative and Operating Procedures



Medicaid Administration

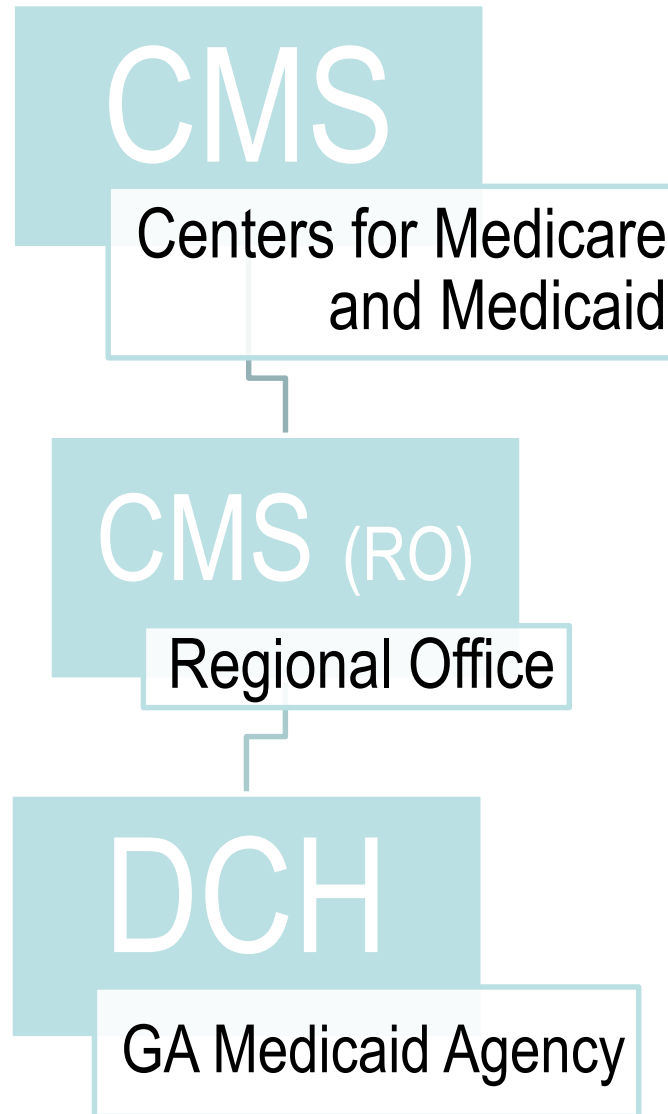
- States and the Centers for Medicare & Medicaid Services (CMS) share responsibility for operating Medicaid programs
- DCH is the **single State Agency** designated to administer the Georgia Medicaid program (42 C.F.R. § 431.10)

State Medicaid administrative duties include:

- Monitoring quality services
- Ensuring appropriate spending according to regulations
- Collecting and reporting information necessary for effective program administration and accountability.
- Resolving grievances by applicants, enrollees, providers and plans.



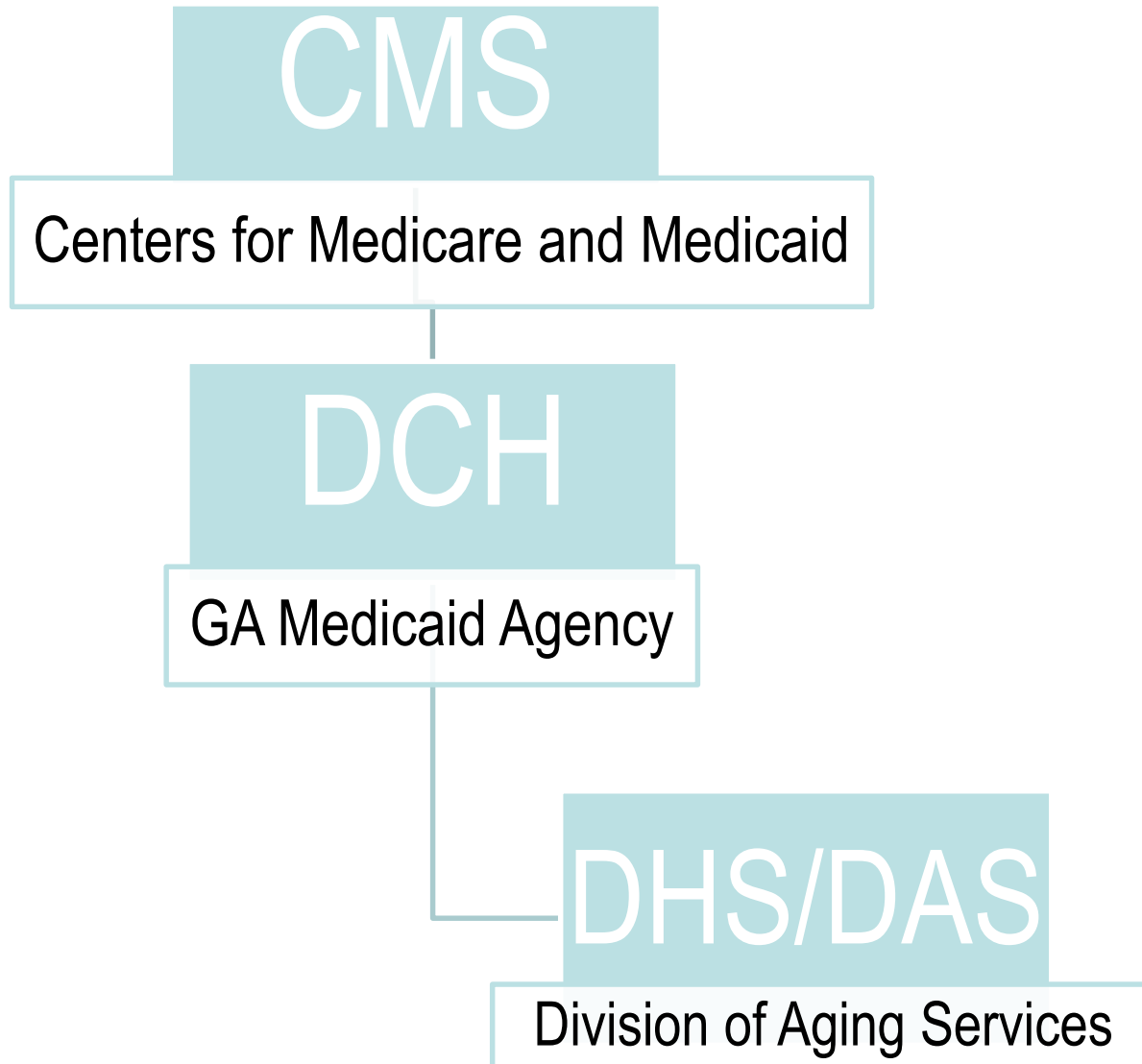
Medicaid Structure



Medicaid Home and Community Services

- The designated State Medicaid Agency, DCH, may choose to administer and operate waiver programs OR they may choose to delegate the operations
- For the CCSP program, DCH has delegated the day-to-day management of operations to DHS/Division of Aging Services

Medicaid Structure



DCH Oversight

- **DCH Responsibilities**
 - Waiver Assurances
 - Reporting to CMS (e.g. “372” Financial Reports)
 - Regular management/planning meetings
 - Ensuring slots are managed appropriately
 - Conducting Program Integrity audits
 - Waiver amendments and renewals
 - Answering to CMS with any questions or concerns



SOURCE

Service Options Utilizing Resources in the Community Environment (SOURCE)

- One of two programs under the Elderly & Disabled Waiver
- Eligibility – must have functional impairments that limit self-care
 - Intermediate Nursing Home Level of Care
 - Unmet need for care
 - Plan of Care must be approved by physician
 - Cost of Services cannot exceed annual cost of care in nursing home
 - Must receive SSI
 - Cannot have a primary mental health or developmental disability diagnosis



SOURCE

DCH Administers and Operates SOURCE:

- Manage level of care validation for CCSP and SOURCE
- Manages slots and waiting lists
- Manage budget and state share
- Manage provider enrollment of Enhanced Case Management agencies

SOURCE Utilization Data FY 2006-FY 2015

*See handout

Questions?