

Care Management Organization

Graduate Medical Education (GME)
Supplemental Payment

May 4, 2006



Georgia
Healthy
Families

Georgia Healthy Families – GME Impact

- ▲ Currently the Medicaid FFS Program includes the GME Payment per Case Rate in with the inpatient claims payment

- ▲ Georgia Healthy Families (GHF) will transition members from traditional FFS Medicaid to Care Management Organizations (CMOs)
 - Member Types - RSM, LIM, Refugee and PeachCare for Kids (PCK)
 - 6/1/2006 Implementation for the Atlanta and Central Regions
 - 650,000+ Members
 - 9/1/2006 Implementation for all other regions
 - 480,000+ Members

- ▲ The Department of Community Health (DCH) will continue to include the GME Payment per Case Rate when a FFS claim is paid

- ▲ DCH will implement a process to pay the GME Payment per Case Rate directly to the Facilities for GHF member admissions

GME Prospective Payment - Calculation

- ▲ Extracted FFS admissions for Fiscal Year 2005 Dates-of-Service (July 1, 2004 - June 30, 2005)
- ▲ Reduce admissions by those Members that will remain FFS (Non-Georgia Healthy Families)
- ▲ Calculate "average number of admits" per month
- ▲ Determine Monthly Prospective Payment:
 - Multiply "average number of admits" x Medicaid GME Payment Per Case Rate
 - Discount by 15 %:
 - 8% Utilization
 - 7% FFS Transition Period
- ▲ First Quarter Payment
 - Atlanta/Central - Monthly Prospective Payment x 3 months
 - All Other Regions - Monthly Prospective Payment x 4 months
- ▲ Second Quarter Payment
 - Atlanta/Central - Monthly Prospective Payment x 4 months
 - All Other Regions – Monthly Prospective Payment x 3 months
- ▲ Third Quarter Payment and Ongoing
 - Quarterly Prospective Payment (based on CMO actual) and Reconciliation of Prior Quarters

Note: Maximum Period for Settlement Adjustments is 12 months

Payment Schedule



	Atlanta/Central	All Other Regions
Implementation Date	June 1, 2006	September 1, 2006
Payment on July 15, 2006		
dates of service in estimated payment	June 1 - Aug 31	n/a
data source for estimate	FFS data from DSS	n/a
Payment on October 15, 2006		
dates of service in estimated payment	Sept 1 - Dec 31	Sept 1 - Dec 31
data source for estimate	FFS data from DSS	FFS data from DSS
Payment on February 15, 2007		
dates of service in estimated payment	Jan 1 - Mar 31	Jan 1 - Mar 31
data source for estimate	CMO data for prior periods	FFS data from DSS
dates of service in settlement calculation	June 1 - Aug 31	
Payment on May 15, 2007		
dates of service in estimated payment	April 1 - June 30	April 1 - June 30
data source for estimate	CMO data for prior periods	CMO data for prior periods
dates of service in settlement calculation	June 1 - Dec 31	for Sept 1 - Dec 31
NOTE: for subsequent quarters, schedule for payment on May 15, 2007 would be updated by 3 months. The maximum period for settlement adjustments would be 12 months.		

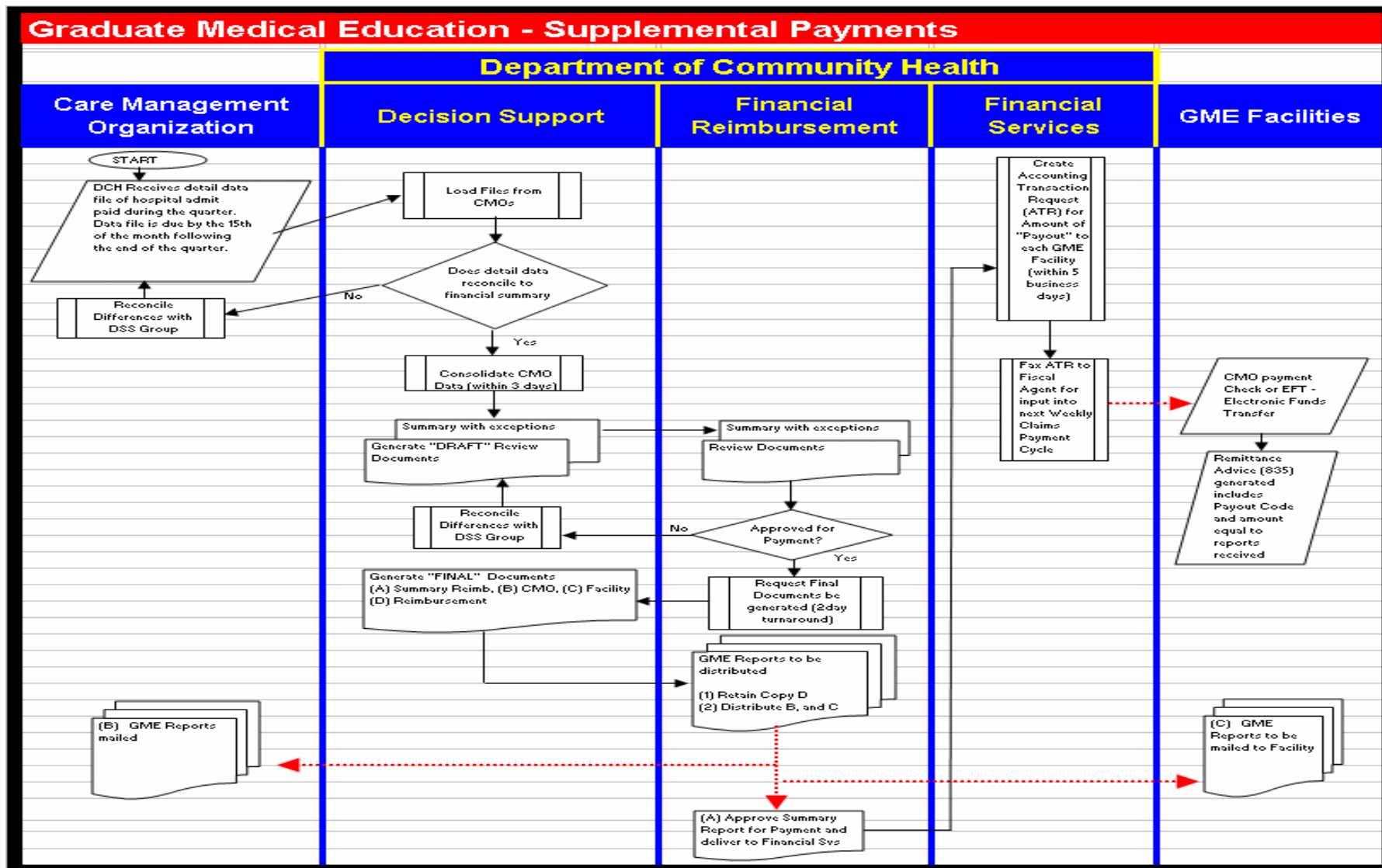


Example of Prospective Payment Calculation

Department of Community Health	
GME Facility Inpatient Prospective Payment Calculation	
Teaching Hospital TLC	
Total FY 2005 Admits	6,258
Less: FFS Member Admits	<u>2,891</u>
Georgia Healthy Family Admits	<u><u>3,367</u></u>
Region	Admits
Atlanta	3,309
Central	30
East	2
North	12
Southeast	8
Southwest	6
Facility/Hospital Total	3,367
Atlanta and Central	3,339
Average Number of Admits per Month	278
GME Payment Per Case Rate	\$ 508.58
GME Estimated Payment	\$ 141,385.24
Discounted by 15%	<u>\$ (21,207.79)</u>
Monthly Prospective Payment *	<u><u>\$ 120,177.45</u></u>
* To be used for the June - December 2006 estimated payments	
All Other Regions	28
Average Number of Admits per Month	2
GME Payment Per Case Rate	\$ 508.58
GME Estimated Payment	\$ 1,017.16
Discounted by 15%	<u>\$ (152.57)</u>
Monthly Prospective Payment**	<u><u>\$ 864.59</u></u>
** To be used for the September 2006 - March 2007 estimated payments	

Example of Payment Reconciliation

	Atlanta/Central		All Other Regions		Total Payment
	Admits	Dollars	Admits	Dollars	
Example GME rate = \$508.58					
Payment on July 15, 2006					
Prospective Payment	709	360,532.35			360,532.35
Payment on October 15, 2006					
Prospective Payment	945	480,709.80	7	3,458.36	484,168.16
Payment on February 15, 2007					
CMO Reported Admissions for DOS June 1 - Aug 31 Paid Dates June 1 - Dec 31	800	406,864.00			
Less July 15, 2006 Prospective Payment		(360,532.35)			
First Quarter Reconciliation Amount		46,331.65			
Prospective Payment	800	406,864.00	5	2,593.77	
Total Payment Issued		453,195.65		2,593.77	455,789.42
Payment on May 15, 2007					
CMO Reported Admissions for DOS June 1 - Aug 31 Paid Dates Jan 1 - March 31	30	15,257.40			
CMO Reported Admissions for DOS Sept 1 - Dec 31 Paid Dates Jan 1 - March 31	835	424,664.30	10	5,085.80	
Second Quarter Actual Amount		439,921.70		5,085.80	
Less October 15, 2006 Prospective Payment		(480,709.80)		(3,458.36)	
Second Quarter Reconciliation Amount		(40,788.10)		1,627.44	
Prospective Payment	626	318,498.23	10	5,085.80	
Total Payment Issued		277,710.13		6,713.24	284,423.37



Next Steps:



- GME Facility to Provide Contact Person(s) and Report Distribution List
- DCH / CMO Testing
 - CMO to submit test data file and financial summary report
 - DCH to generate reports and distribute to CMOs and GME Hospitals

DCH Contact Information:



▲ Data File and Report Questions

Leigh R. Dobbs

Manager
Medicaid Analysis Unit
Office of Planning and Fiscal Analysis
Department of Community Health
Phone: 404.657.5763
ldobbs@dch.ga.gov

Tish Woolley

Manager CMO Operations
Medicaid Analysis Unit
Office of Planning and Fiscal Analysis
Department of Community Health
Phone: 404.656.0768
twoolley@dch.ga.gov

Laura Ginn

CMO Analyst
Medicaid Analysis Unit
Office of Planning and Fiscal Analysis
Department of Community Health
Phone: 404.656.0403
lginn@dch.ga.gov

▲ GME Provider Questions

David Riddle

Program Director
Hospital Services
Department of Community Health
Phone: 404.656.4530
driddle@dch.ga.gov