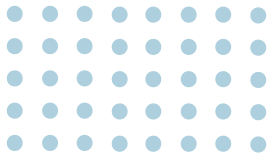


Rural Health Transformation (RHT) Program: GREAT Health Program

Stuart Portman
Executive Director
Medical Assistance Plans
Division

Date: December 11, 2025

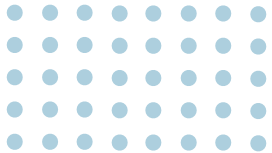




GEORGIA DEPARTMENT
OF COMMUNITY HEALTH

Our Purpose

Shaping the future of *A Healthy Georgia* by improving access and ensuring quality to strengthen the communities we serve.





- H.R. 1 (often referred to as the One Big Beautiful Bill Act or Working Families Tax Cut Act), signed into law on July 4, 2025, created the Rural Health Transformation Program, which appropriated \$50 billion over five years to states who apply.
- States are required to submit an application that addresses at least three of the following intended uses of funds: (1) prevention and chronic disease management, (2) provider payments, (3) consumer tech solutions, (4) training and technical assistance, (5) workforce, (6) IT advances, (7) appropriate care delivery, (8) behavioral health, and (9) innovative care.
- The Notice of Funding Opportunity (NOFO) was published on September 15, 2025, and the deadline for submission was Wednesday, November 5, 2025 at 11:59 p.m.



- Georgia's application was created based upon input from stakeholders across the state, including:
 - Commentary from four townhalls
 - Cordele
 - Jasper
 - Vidalia
 - Virtual
 - Online idea submission form
 - Over 150 ideas submitted from state and nationwide entities
 - Individual meetings with state agencies and partners (DPH, DBHDD, DHS, GWBHC, University System of Georgia, and more)



- Positive considerations
 - Transformative in nature
 - One-time potential
 - Supporting overall state health goals
- Constraints
 - No rate increases or projects that obligate state/federal government for additional funds moving forward
 - One-time potential
 - No supplanting existing state funds or appropriations



Georgia Rural Enhancement And Transformation of Health (GREAT Health) Program

- Five initiatives, based on the five strategic goals of the RHT Program:
 - Transforming for a Sustainable Health System
 - Strengthening the Continuum of Care
 - Connecting to Care to Improve Healthcare Access
 - Growing a Highly Skilled Healthcare Workforce
 - Leveraging Technology for Healthcare Innovations
- Each initiative has various strategies to help achieve the overall goal.



- Rural *populations* are healthier, live longer, have an improved quality of life, and can both live and work in the communities they love.
- Rural *places* have healthcare that is high quality, more abundant, and more effective.
- Rural *progress* creates systems-level change that leverages technology, drives innovation, and improves quality, while maintaining a patient focus and embracing patient voice.



Transforming for a Sustainable Health System has one overall strategy.

- Creates on-ramp for Georgia to participate in value-based care through the CMS-based Achieving Healthcare Efficiency through Accountable Design (AHEAD) model.
- Makes delivery of healthcare in rural Georgia more financially sustainable for providers
- Funds assessments for healthcare providers and risk mitigation funds to assist in real-time learning on total-cost-of-care budgeting



Strengthening the Continuum of Care includes *9 strategies*

- Public Health Investments
 - Georgia Newborn Screening Program
 - Inter-hospital Transportation
- Support for Acquired Brain Injury Survivors
- Transportation to Treatment for Mental Health Crisis
- Building Bridges (School-Based Health Care Services Infrastructure)
- Emergency Preparedness— Shelter-in-Place Infrastructure
- Regional Nursing Home Transportation Enhancement
- Rural Provider Nutrition Training for Autism Spectrum Disorder (ASD)
- *Planning for Healthy Babies*: Nutrition and Weight Management Interpregnancy Care Eligibility Category



Connecting to Care to Improve Healthcare Access includes *6 strategies*

- Care to Consumer: Point of Care Telepods and Mobile Clinics
- Telehealth Enhancements
- Rural Stabilization Grants (RSG)
- Strengthening Perinatal Systems of Care
- Public Health Telehealth Infrastructure for County Health Departments
- Rural Telepsychiatry: Consultations and Primary Care Provider Training
 - Pediatric ECHO Model with DBHDD
 - Pregnant women through *PEACE for Moms* with DPH and DBHDD



Growing a Highly Skilled Healthcare Workforce includes *5 strategies*

- Rural Provider Workforce and GME Enhancements
 - Funding for new and existing GME program expansion
 - Rural Recruitment Incentive Grants for doctoral-level providers
- Nursing Care Improvements, including nursing faculty recruitment incentives
- Virtual Provider Education on Dementia
- Area Health Education Centers (AHEC) Training and Housing
- EMT and Paramedic Scholarships



Leveraging Technology for Healthcare Innovations includes *8 strategies*

- Cybersecurity Enhancements
- Advancing Access to Robust Care and Health in Rural Georgia (ARCHER) Tech Catalyst Fund
- EMR Enhancements
- Robotic Surgical Support/Workforce Retention Technology
- Eligibility System Enhancements
- Consumer Engagement Enhancements
- Behavioral Health State Assessment of Technology
- EMS Treat-versus-Transport

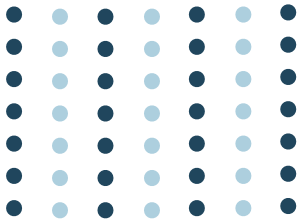


CMS will reach out to discuss potential award and give final budgets to states. In the meantime, DCH will:

- Begin implementation planning in detail per strategy
- Formalize grantmaking process and design to adhere to federal requirements
- Begin search for staffing to ensure seamless implementation (combination of state staff and contractors)



- SORH will ***continue*** to administer *federal programs* currently in progress
 - Small Rural Hospital Improvement Program
 - Medicare Rural Hospital Flexibility (FLEX) Grant
 - HRSA State Office of Rural Health Grant
 - Primary Care Office Cooperative Agreement
 - HRSA Health Center Cluster Grant
- SORH will ***continue*** to administer *state-funded, legislatively directed grants and programs* currently in progress and will offer additional opportunities as new state funding is identified.
- Specific to ***Rural Health Transformation Program***, SORH will assist with distribution of funds, grant management and oversight, and federal reporting requirements for ***GREAT Health Programs*** managed within the SORH office
 - SORH will increase staffing as needed to manage increased work-load
 - SORH will provide technical assistance to DCH, other State Agencies, partners, stakeholders, and grantees as needed or requested
 - Core SORH responsibilities ***will continue without interruption***



GEORGIA DEPARTMENT
OF COMMUNITY HEALTH

THANK YOU!

