



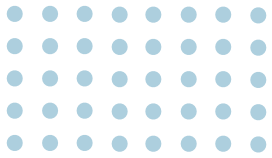
GEORGIA DEPARTMENT  
OF COMMUNITY HEALTH

# Program of All- Inclusive Care for the Elderly (PACE)

Brian Dowd, Deputy Executive  
Director, Medical Assistance Plans

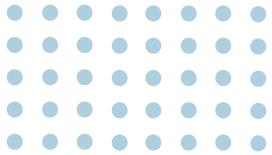
Date: January 9, 2025





# Our Mission

The mission of the Department of Community Health is to provide access to affordable, quality health care to Georgians through effective planning, purchasing, and oversight.

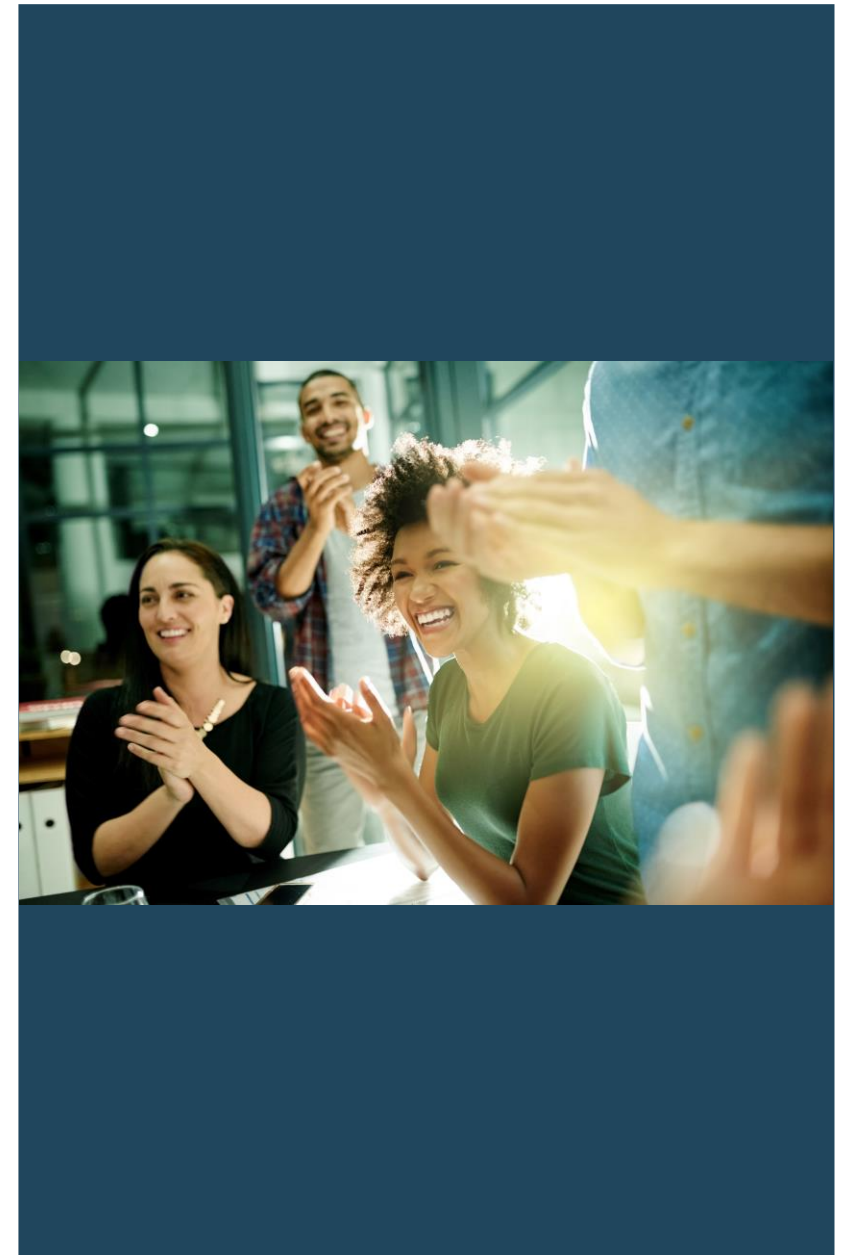




GEORGIA DEPARTMENT  
OF COMMUNITY HEALTH

# Our Purpose

Shaping the future of *A Healthy Georgia* by improving access and ensuring quality to strengthen the communities we serve.





# What is PACE?



- A managed care program for the elderly.
- Uses interdisciplinary teams to assess and meet the care needs of participants.
- Paid for by capitated payments from Medicaid and Medicare, representing ALL payments for services.
- The PACE organization is responsible for providing care that meets the needs of each participant across all settings, 24 hours a day, every day of the year.
- If other outside services are necessary for a participant, the PACE organization must arrange for them and is financially responsible.

\*Eligible beneficiaries who choose to enroll in PACE agree to forgo their usual sources of care and receive all their services through the PACE Organization. This is similar to a “Kaiser” model of integrated care.



# Who is PACE Eligible?



- Reside in a PACE organization service area.
- Must meet the nursing home level of care.
- Must be able to live safely in the community.
- Must be at least 55 years old.

\*Enrollment in the PACE program is voluntary. If an individual meets the eligibility requirements and elects PACE, then an enrollment agreement is signed. Enrollment continues as long as desired by the individual, regardless of change in health status, until voluntary or involuntary disenrollment.



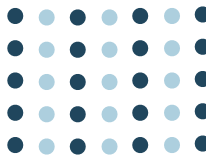
# Who Can Be a PACE Organization?



- Non-profit, private, or public entity that is primarily engaged in providing PACE health care services.  
Organizations must have the following:
- A governing board that includes community representation;
- A physical site and a facility that is approximately 10,000 square feet to provide adult day services;
- A defined service area;
- The ability to provide the complete service package regardless of frequency or duration of services;
- Safeguards against conflict of interest;
- Demonstrated fiscal soundness.



# Who is on a PACE Interdisciplinary Team?



An interdisciplinary team, consisting of professional and paraprofessional staff, assesses an enrollee's needs, develops care plans, and delivers all services (including acute care services and when necessary, nursing facility services).

- Dietician
- Driver
- Home care liaison
- Nurse
- Occupational therapist
- PACE center supervisor
- Personal care attendants
- Physical therapist
- Primary care physician
- Recreational therapist or activity coordinator
- Social worker



# What Services are Covered Under PACE?



- Adult day care
- Dentistry
- Emergency services
- Home care
- Hospital care
- Laboratory/x-ray services
- Meals
- Medical specialty services
- Nursing home care
- Nutritional counseling
- Occupational therapy
- Physical therapy
- Prescription drugs
- Primary care (including doctor and nursing services)
- Recreational therapy
- Social services
- Social work counseling
- Transportation

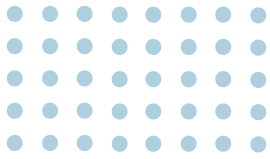




# What Services are Covered Under PACE?



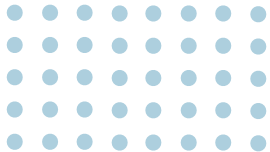
- Including but not limited to all Medicare and Medicaid services.
- PACE also includes all other services determined necessary by the health professional's team to improve and maintain an individual's health.



GEORGIA DEPARTMENT  
OF COMMUNITY HEALTH



# DCH Assessment of PACE Program Implementation





The 2024 Appropriations Act directed DCH to conduct a needs assessment of PACE.

“The Department of Community Health shall conduct a needs assessment on the establishment of one or more Programs of All-Inclusive Care for the Elderly (PACE) programs.”



- DCH staff contacted and met with the National Pace Association staff.
- DCH contacted and met with interested providers.
- DCH contacted and met with representatives for North Carolina and South Carolina.
- DCH reviewed estimates of potential members who could be served.



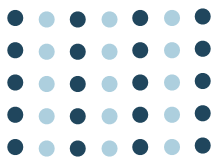
- Providers showed interest in Fulton and Dekalb Counties (metro Atlanta), Bibb County (Macon), and Chatham County (Savannah).
- PACE programs typically revolve around a 10,000 square foot facility serving individuals in a 50-mile radius.
- Each facility serves 100 to 250 members.
- Members visit center multiple times weekly.



- DCH asked the National Pace Association to do a viability check on the counties of Fulton, Dekalb, Chatham, and Bibb given the provider interest in those areas.
- Additionally, one national PACE provider provided their industry assessment of viability for these counties and a number of other metro areas within Georgia.
- National PACE staff estimates a center needs 100 members to remain financially viable.



- DCH reviewed the potential number of new nursing facility entrants versus eligibility for PACE for those members. Enrollment into PACE typically runs between 10 and 15 percent of those eligible.
- DCH assessed the highest viability is in Fulton and Dekalb, but Bibb and Chatham also have viability.
- Utilizing the national provider industry estimate of other GA counties there was viability as well in Richmond, Gwinnett, Muscogee and Cobb.



- DCH pursued legislation, House Bill 1078, during the 2024 legislation session which would permit DCH to establish and implement PACE in Georgia.
- HB 1078, sponsored by Representative Jesse Petrea and carried in the Senate by Senator Ben Watson, has passed both the House and the Senate and is currently awaiting the Governor's signature.

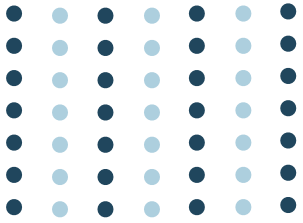




- The Amended Fiscal Year 2024 budget, signed by Governor Kemp on 2/29/2024, includes language and a \$2 million total in funding for DCH to provide grants to non-profit PACE providers.
- “Increase funds for one-time grants up to \$500,000 for the development of nonprofit PACE to provide home and community-based services.”
- This funding will allow DCH to provide grants to up to four grants of \$500,000 to potential non-profit PACE providers.



1. Development of PACE program policies.
2. Development of per diem rates.
3. Submission of State Plan Amendment to Centers for Medicare and Medicaid Services (CMS) that includes areas of coverage.
4. Contract with each provider and CMS.
5. Establish new eligibility aid category for Medicaid.
6. Configure GAMMIS for payment to providers.
7. An ongoing performance improvement and quality oversight process would be developed by DCH to confirm appropriate care and outcomes.



GEORGIA DEPARTMENT  
OF COMMUNITY HEALTH

**Questions?**

