



GEORGIA DEPARTMENT
OF COMMUNITY HEALTH

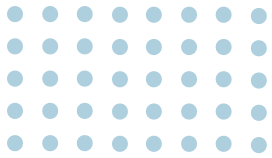
TENTATIVE

Office of Audits Updates

Sonja Allen-Smith
Inspector General
Office of Inspector General

March 14, 2024

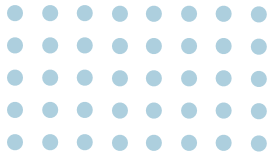




GEORGIA DEPARTMENT
OF COMMUNITY HEALTH

Our Purpose

Shaping the future of *A Healthy Georgia* by improving access and ensuring quality to strengthen the communities we serve.





OIG Mission

OIG safeguards the integrity of the DCH from risks internally and externally. Detecting fraud, waste and abuse is the office's clear charge.

OIG rigorously reviews, investigates and audits Medicaid providers and recipients to uncover criminal conduct, administrative wrongdoing, poor management practices, and other waste, fraud, and abuse.

OIG also reviews the State Health Benefit Plan (SHBP), Healthcare Facility Regulation (HFR) and other offices at DCH.





- Office of Audits Updates
- Current Federal Audits:
 - COVID-19 PHE Unwinding Medicaid Beneficiary Eligibility Review
 - Disproportionate Share Hospital (DSH) Audit
 - Home and Community Based Services (HCBS) Services Assessment

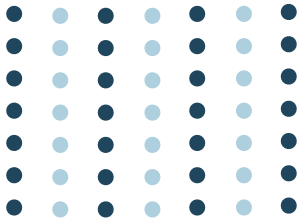


- Current State Audits:
 - Statewide Single Audit
 - Rural Health Tax Credit Performance Audit
 - Medicaid Dental Program Performance Audit
 - HFR Performance Audit

- Prior Active Audits – Update
 - CMS State Focused Program Integrity Review
 - CMS Center for Program Integrity GA RAC Review

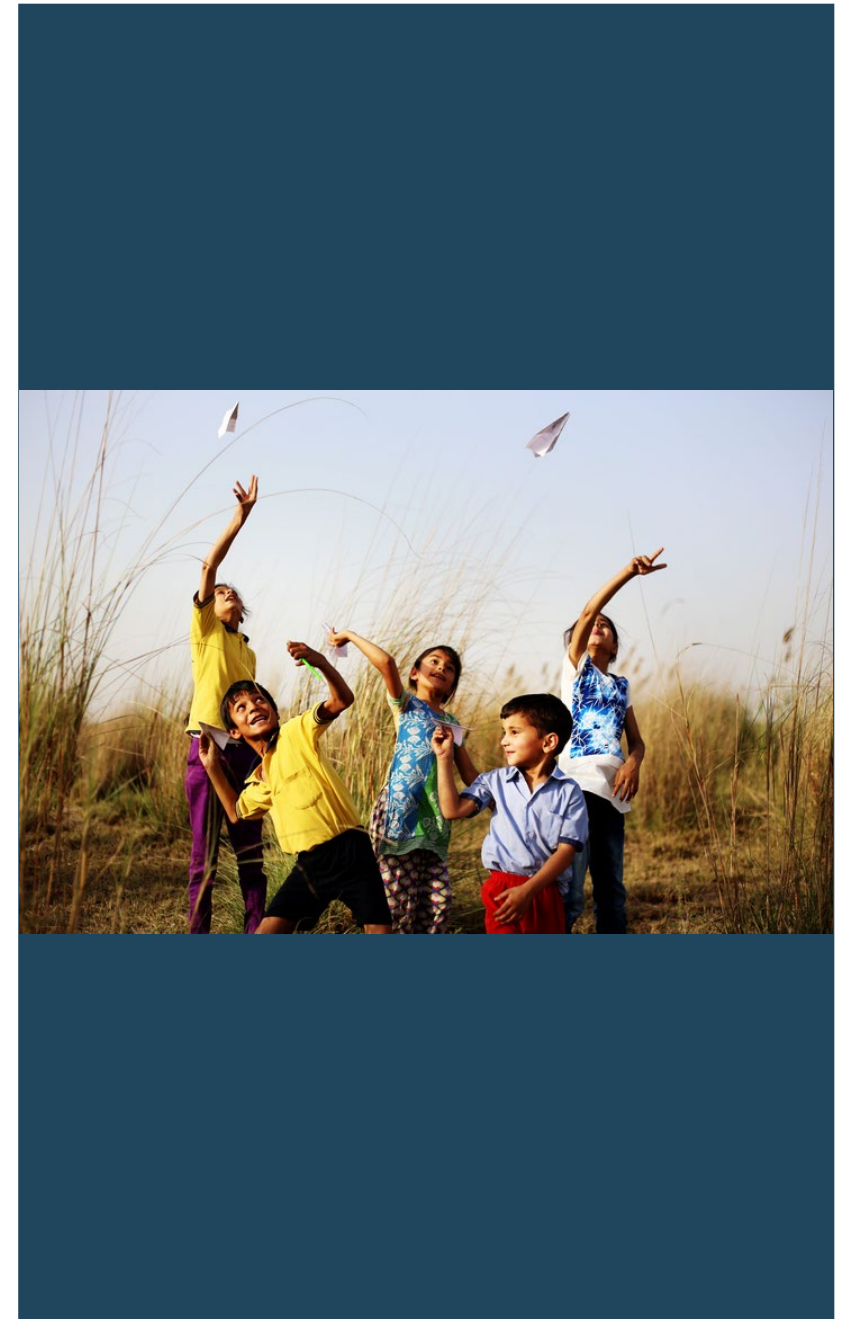
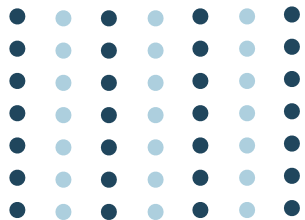


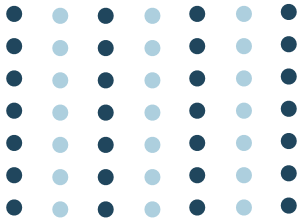
- Prior Active Audits – Update
 - CMS State Focused Program Integrity Review
 - CMS Center for Program Integrity GA RAC Review
 - DOAA Contracts & Procurement
 - DOAA Medicaid/Peachcare Program Integrity Review
- Status of Prior Year Findings



GEORGIA DEPARTMENT
OF COMMUNITY HEALTH

THANK YOU!
QUESTIONS /
COMMENTS?





GEORGIA DEPARTMENT
OF COMMUNITY HEALTH



O I G

The main title 'O I G' is rendered in a large, bold, blue serif font. The 'O' is significantly larger than the 'I' and 'G'. To the left of the 'O' is a large, stylized version of the Georgia Department of Community Health logo, which is a circular emblem made of overlapping blue lines.

Office of Inspector General
A Division of the Georgia Department of Community Health

