



Stratus
HEALTHCARE
Connecting Care...Together for Health

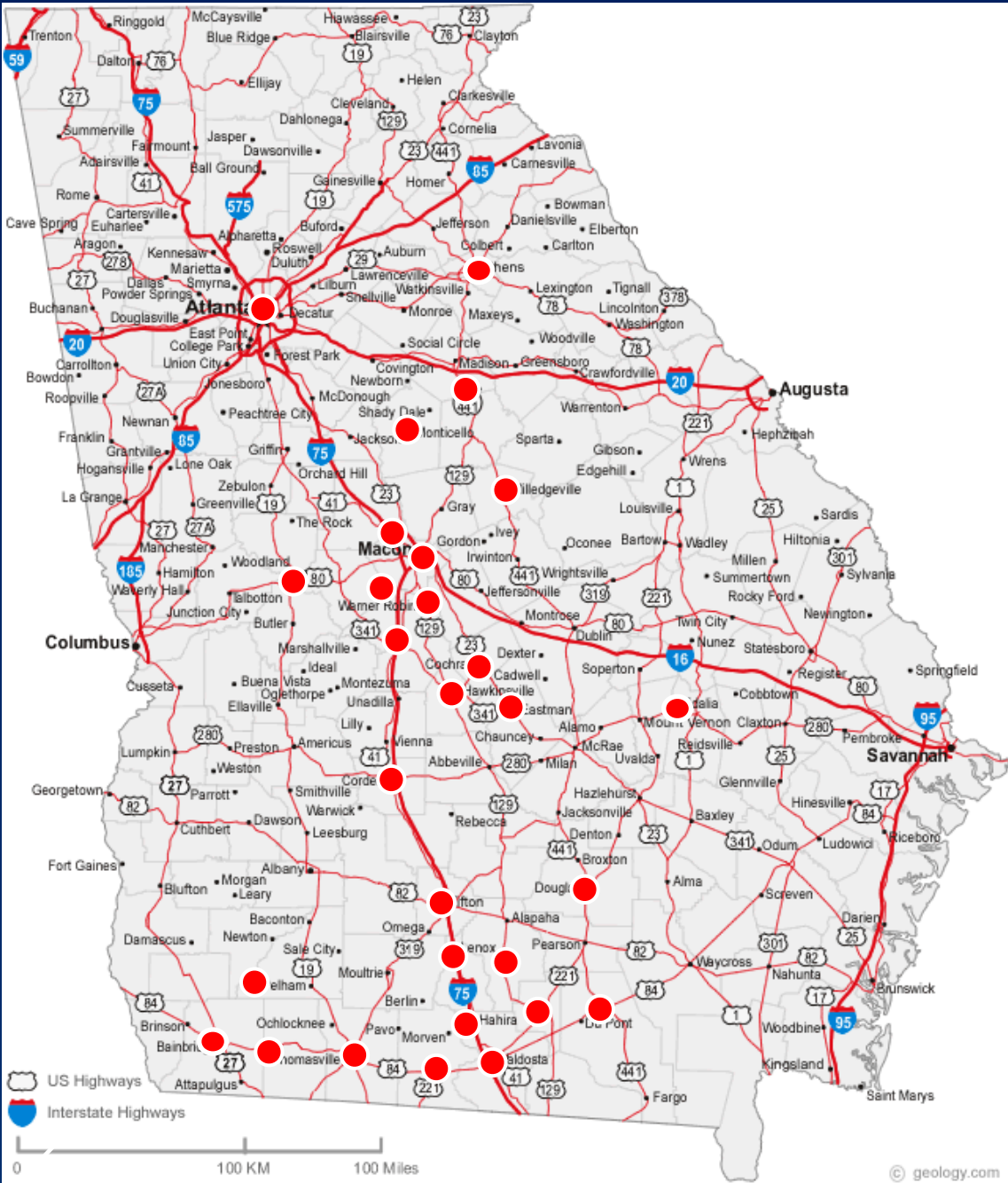
Rural Hospital Stabilization Committee

December 5, 2014
2 Peachtree Street
Atlanta, Georgia

Julie Ellen Windom, ESQ
Director of Policy and Advocacy
julieellen10@me.com
404-509-3573

Membership

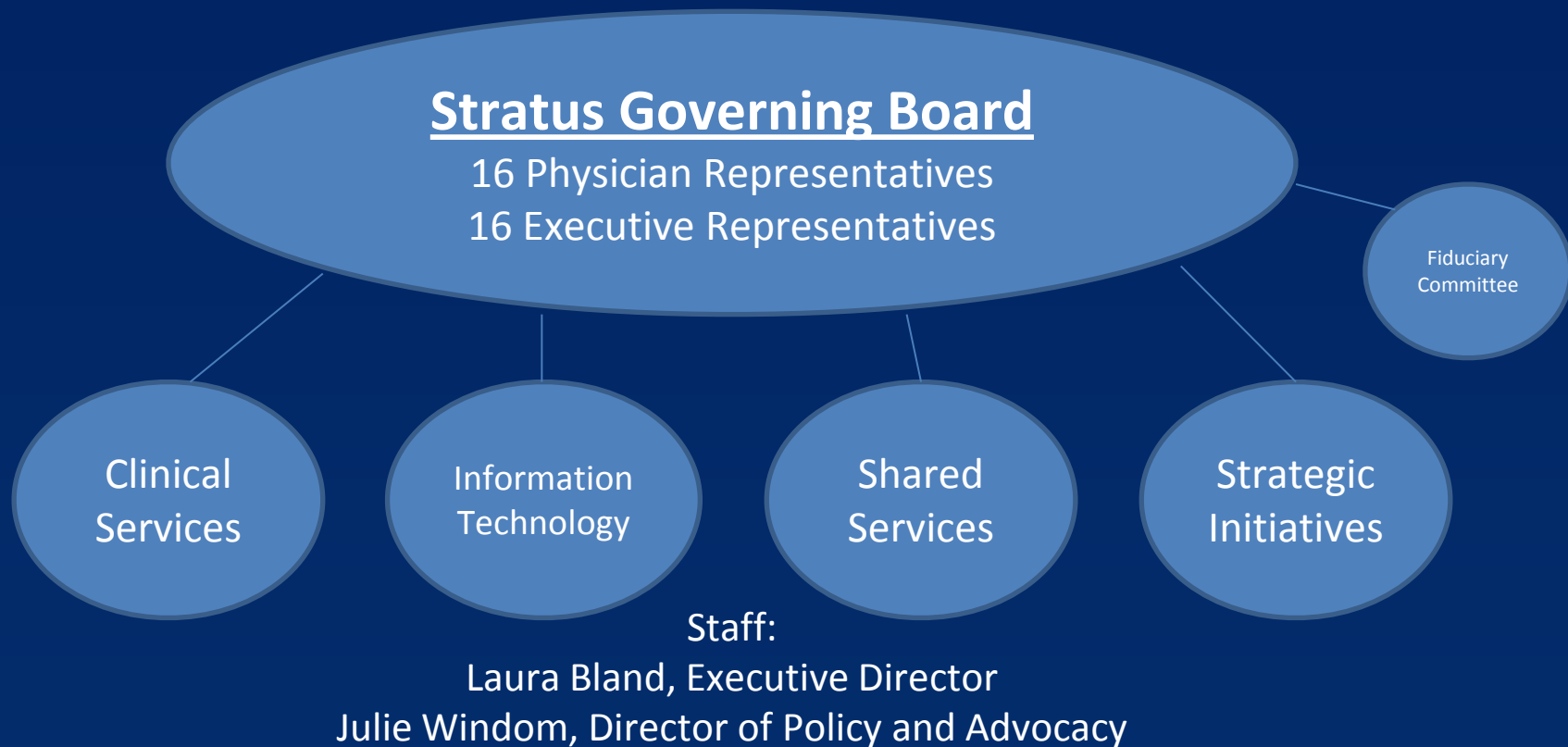
- ❖ 30 Hospitals
- ❖ 16 Health Systems
- ❖ Approximately 2,000 Physicians
- ❖ Approximately 22,000 Employees
- ❖ Total Annual Expenses in Excess of \$2.2 Billion
- ❖ Over 3,500 Total Beds



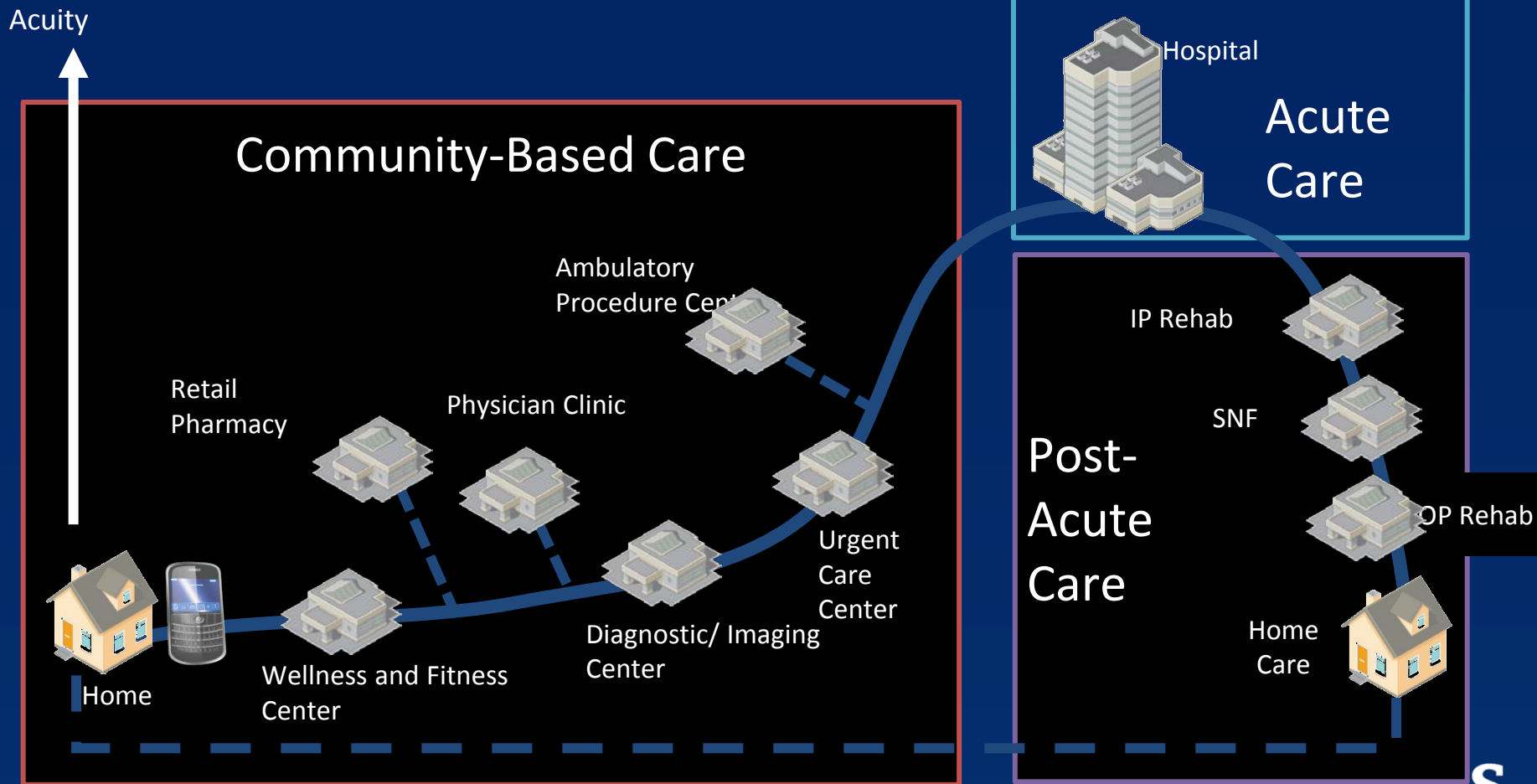
Membership

- ❖ Archbold Medical Center
 - ❖ John D. Archbold Memorial Hospital (Thomasville)
 - ❖ Mitchell County Hospital (Camilla)
 - ❖ Grady General Hospital (Cairo)
 - ❖ Brooks County Hospital (Quitman)
- ❖ Navicent Health
 - ❖ The Medical Center (Macon)
 - ❖ Central Georgia Rehabilitation Hospital (Macon)
 - ❖ Medical Center of Peach County (Byron)
- ❖ Coffee Regional Medical Center (Douglas)
- ❖ Crisp Regional Medical Center (Cordele)
- ❖ Dodge County Hospital (Eastman)
- ❖ Houston Healthcare
 - ❖ Houston Medical Center (Warner Robins)
 - ❖ Perry Hospital (Perry)
- ❖ Meadows Regional Medical Center (Vidalia)
- ❖ Memorial Hospital and Manor (Bainbridge)
- ❖ Oconee Regional Health Systems
 - ❖ Oconee Regional Medical Center (Milledgeville)
 - ❖ Jasper Memorial Hospital (Monticello)
- ❖ Putnam General Hospital (Eatonton)
- ❖ Shepherd Center (Atlanta)
- ❖ South Georgia Medical Center Health System
 - ❖ South Georgia Medical Center (Valdosta)
 - ❖ Smith Northview Hospital (Valdosta)
 - ❖ Louis Smith Memorial Hospital (Lakeland)
 - ❖ Clinch Memorial Hospital (Homerville)
 - ❖ SGMC-Berrien Campus (Nashville)
- ❖ St. Mary's Health Care System
 - ❖ St. Mary's Health Care (Athens)
 - ❖ St. Mary's Good Samaritan Hospital (Greensboro)
- ❖ Taylor Health Group
 - ❖ Bleckley Memorial Hospital (Cochran)
 - ❖ Taylor Regional Hospital (Hawkinsville)
- ❖ Tift Regional Health System
 - ❖ Tift Regional Medical Center (Tifton)
 - ❖ Cook Medical Center (Adel)
- ❖ Upson Regional Medical Center (Thomaston)

Stratus Healthcare



Expand Definition of Services to Encompass the Full Continuum of Care



CARE = Clinical Alignment and Resource Effectiveness; IP = inpatient; OP = outpatient; SNF = skilled nursing facility.

2015 Strategic Goal: Clinical Integration

- ❖ Purpose of clinical integration
 - ❖ Improve quality of care
 - ❖ Decrease costs
 - ❖ Improve overall patient experience
- ❖ Components of clinical integration
 - ❖ Physician leadership
 - ❖ Performance monitoring
 - ❖ Data information/tech infrastructure
 - ❖ Payer engagement
 - ❖ Common vision for healthcare across the continuum of care
 - ❖ Legal infrastructure

Other Efforts to Help Patients & Members

- ❖ Stroke protocol for "stroke belt" of state
- ❖ Cost efficiencies
 - ❖ Group purchasing opportunities
 - ❖ Shared health plans
 - ❖ Combined billing offices
- ❖ Partnerships between small and large members

Partnerships among Members

❖ Components

- ❖ Not a traditional management contract nor a simple influx of cash
- ❖ Sharing of expertise, leadership resources and systems and talent
- ❖ Mutual desire to keep healthcare local

❖ Examples:

- ❖ Navicent Health & Oconee Regional (Milledgeville & Monticello)
- ❖ Navicent Health & Putnam General (Eatonton)

Policy Considerations

- ❖ Consider conflict between ACA and FTC objectives - support regulations that encourage collaboration whenever possible
- ❖ Consider Medicaid expansion - private option, waiver or limited scope (perhaps for behavioral health population)
- ❖ Consider state support of private efforts (public-private partnership) - perhaps grant funding and/or pilot program



Stratus
HEALTHCARE
Connecting Care...Together for Health

Questions?